

**Temple Beth Emeth
2309 Packard St.
Ann Arbor, MI 48104**

Nonprofit Org
U.S. Postage
PAID
Ann Arbor, MI
Permit No. 104

Temple Beth Emeth is a non-profit religious institution in the State of Michigan.

Saturday, May 3, 2008



Tikkun Olam - Repairing the World

**Join us for a day of service to the
community.**

**11 am Services,
11:30 am to 12:30 pm Lunch,
1 to 4 pm Projects**

On-going TBE Projects:

Volunteer for TBE's Caring Community, please visit www.templebethemeth.org/tbe/caring_community for information or contact Devon at 665-4744, dfitzig@templebethemeth.org.

Delonis Center (Community Kitchen) Meal Program

Ages: 14 to Adult Sponsor: Social Action Committee

The Community Kitchen, operated by Food Gatherers at the Delonis Center (312 W. Huron), prepares and serves meals daily to those in need. Volunteers are needed on the 1st Monday of the month for a two hour shift (either 3—5 or 5—7) or on the 2nd Saturday of odd numbered months for a 2.5 hour shift (either 12—2:30 or 2:30—5). The first shift prepares the meal. The second shift serves and cleans up. Please contact Shoshana Mandel-Warner, shoshie@umich.edu, for the Monday crew or Rachel Erdstein, Erdstein@comcast.net, for Saturday.

Ronald McDonald Easter Project

Ages: Teen to Adult Sponsor: TBE Sisterhood

Help with meals, clean up, answer phones and staff the office. To sign up for a 3-hour shift from 9 am to 9 pm on March 23. Contact Marilyn Jeffs, 663-0438, mgjeffs@sbcglobal.net.

Interfaith Hospitality Network (IHN) Hosting Week

April 7-13, 2008 Ages: Teens and Adults
(Families can participate with their children, ages 7 & up)

- Cook dinner for up to 24 people. You may work with another family. (You can cook at home and bring in).
- Serve the dinner, interact with the families and children, and clean up the kitchen afterward.
- Play with/do homework with children after dinner any night of the week. Play with children during the day on the weekends.
- Cook and serve a fun weekend breakfast.
- Sleep overnight any night of the week to provide staff backup. Bed and private sleeping room provided.
- Purchase/collect shelter supplies for the week.

If you wish to have more information, or would like to volunteer, please contact Susan Greenberg, 761-3253 or sjgrog@umich.edu.

Helpful Information from our Mitzvah Day Planners

Dear Congregants:

Welcome to Mitzvah Day, 2008! On this day, we as a congregation have the opportunity to participate in the great tradition of *Tikkun Olam*, repairing the world. Our goal is to have everyone participate in some way. Please consider donating your time and monetary support. Your financial contribution will help cover the cost of Mitzvah Day lunch, craft supplies and publicity. Other needed items are on page 2 and the inside cover.

Please select the activity that works best for you and your family. We have several projects for all ages. Questions? Contact Devon Fitzig at 665-4744, dfitzig@templebethemeth.org.

T-Shirts

You can order your snappy Mitzvah Day t-shirts on the registration form. The shirts are of high quality, and all proceeds go towards Mitzvah Day expenses.

Mail forms & donations to:

Temple Beth Emeth, Mitzvah Day
2309 Packard St.

Ann Arbor, MI 48104

Please return your form by April 15, 2008. The captain of your project will contact you after you are assigned.

Mitzvah Day Planning Committee: Bob Milstein & Karen Kramer Soebbing, chairs; Sassa Akervall, Ed Davidson, Ketl Freedman-Doan, Marilyn Jeffs, Marty Ludington, Judith Rose, Gayle Rosen, Ruth Scodel, Chuck Wickham; Devon Fitzig, staff.

Thank You!

Collection Drive for Young People's Social Action Projects (#6 & #7)

These projects will be performed at TBE and then delivered to project sites and agencies:

- Birthday party kits filled with hats, candles, cake mix, frosting, small toys, and birthday cards for homeless children in shelters
- Art kits for children in the hospital
- Waiting room kits for children in the emergency room
- Planters & room decorations for senior citizens
- Cookie baking & decorating
- Cards for Jewish Family Service clients



Donations Needed:

The following list includes items we need to collect for the projects in the collection drive. Items should be new or in great condition! You may have them at home or you can pick many of them up at a local dollar store. **Please drop them off at the temple office by April 14.** Thank you in advance for your help!

- Party hats and favors, cake mix and frosting
- Cake decorating supplies
- Birthday cards
- Small toys for birthday party kits (new)
- Small terracotta flower pots
- 9" by 9" yarn squares (washable) for quilts
- Small boxes of crayons
- Washable markers
- Construction paper
- Drawing paper
- Small Play-Doh
- Dot-to-dot, word search, crossword puzzle, Mad-lib, etc., workbooks
- Glue sticks, tissue paper, pipe cleaners



15	Friends In Deed	Ages 15-Adult 3-10 Volunteers
-----------	------------------------	--

Friends In Deed is an inter-faith volunteer organization that provides for unmet emergency needs of low-income Washtenaw County residents. One of their services is to provide free, good condition household furniture for those in need through their furniture program.

On Mitzvah Day, volunteers will pick up and deliver furniture to families in need. Volunteers should be prepared to lift basic household furniture such as sofas, dining tables & chairs, beds, dressers and possibly heavier items such as hide-a-beds, washers, dryers or refrigerators. The FID delivery truck (and dolly) is available for use by a group of volunteers. If volunteers have access to an additional truck that could be used, more furniture could be delivered.



Schedule of the Day

Beginning Time	Ending Time	Project/Event
11 am	11:30 am	Services at TBE
11:30 am	12:30 pm	Lunch at TBE
1:00 pm	3 or 4 pm	Projects

An asterisk () located next to a project description indicates a different beginning or ending time.*

Please remember to let us know how many of you are coming to the lunch and don't forget to order your shirts, enclosing a check with your registration. Financial support of Mitzvah Day is also much appreciated.

--Mitzvah Day Committee

11	Community Action Network (CAN)	Ages 12 to Adults 10 Volunteers
-----------	---------------------------------------	--

Community Action Network is a local non-profit that provides after school and summer programming for kids at two of Ann Arbor's public family housing complexes as well as support services for the families that live there. Adult volunteers are needed to do some deep cleaning in the kitchen of one of the community centers. Please wear work clothes.

12	*Delonis Center Community Kitchen (two shifts)	Ruach (40's & 50's) 20 Volunteers Shift A or B
-----------	---	---

The Community Kitchen, operated by Food Gatherers, at the Delonis Center (312 W. Huron) prepares and serves meals daily to those in need. **Register for either Lunch shift A (cooking) from 12 noon to 2:30, or shift B (serving), 2:30 to 5 pm.**

13	Mott Hospital-Child Life	Teens 20 Volunteers
-----------	---------------------------------	--------------------------------

Help paint 3'x 4' banners for patients' birthdays and "off Chemo" day festivities. These wonderful banners help brighten the children's rooms while they stay in the hospital. We will also need help dropping off the banners at the hospital after the project. Please dress appropriately. This activity will be done at TBE.



14	Jewish Family Services	Ages 15-Adult 2-4 Volunteers
-----------	-------------------------------	---

JFS is a social service agency that provides resettlement, mental health, vocational services and assistance to older adults and families. Volunteers are needed to construct a small food pantry for Jewish Family Services. Materials will be supplied; please come with light tools such as screwdrivers, hammers, drills. JFS will provide the pre-fab shelves or shelving units which volunteers will assemble.

1	*American Red Cross	Ages 17-Adult Sponsored by Brotherhood
----------	----------------------------	---

Mitzvah Day participants will be able to give the most precious gift of all, the gift of life. Please visit www.givelife.org, sponsor code 'tbe' or call 665-4744 to reserve your time slot.



Donating blood usually takes about one hour. For most volunteers, it will be possible to give blood and participate in another Mitzvah Day project. **9:00 am-3:00 pm.** Volunteers are also needed to work the registration table and the canteen for 2-hour shifts.

2	Food Gatherers	Renaissance Group 20 volunteers
----------	-----------------------	--

This organization collects and distributes food to needy organizations and families. Food Gatherers is located off of Dhu Varren on 1 Carrot Way, on the northeast side of town. Volunteers will help with sorting food items and preparing food for distribution. Volunteers will work in one group of twenty.

3	Mitzvah Day Choir Project	All Ages 20-40 Volunteers
----------	--------------------------------------	--------------------------------------

We have received special requests for our fabulous TBE voices to brighten up the day for seniors at area nursing homes under the direction of Cantor Annie Rose. Anyone who likes to sing is welcome to meet in the chapel at 12:30 pm.



4	*Lunch	Ages 15-Adult 12 Volunteers
----------	---------------	--

Do you enjoy cooking? On Mitzvah Day we need help setting up, cooking and cleaning up afterwards for the lunch. We also need help preparing the food on the afternoon before. This is a fun, fast paced Mitzvah with yummy results. **Please let us know if you are available to help both or maybe just one of the days: Friday afternoon from 2-5 pm; Mitzvah Day from 9 am-1 pm.**

Registration Form

Due by April 15, 2008

YES! Please sign me/us up as a Mitzvah Day Volunteer!

Sign up for projects by project number. List the name (and age for those under 18 yrs) of each participant on a separate line.

First and Last Name	Age	Project Name/ Project Number 1 st Choice	Project Name/ Project Number 2 nd Choice	Project Name/ Project Number 3 rd Choice

All projects are filled in the order that participation forms are received.

Project Leaders may reach me at the following phone number and/or e-mail addresses.

Phone Number: _____	E-mail Address: _____
---------------------	-----------------------

Please register for the free Lunch: Number of People

I wish to make a financial contribution to Mitzvah Day 2008 in the amount of:

\$18 ____	\$36 ____	\$50 ____	Other _____
-----------	-----------	-----------	-------------

Please volunteer to donate blood at TBE to the American Red Cross.

Name: _____

Time: _____

Name: _____

Time: _____

Please specify a one hour-time slot between 9 am-3 pm for a preferred donation time.

(Allow one hour for the donation)

Thank You

Total Amount Enclosed: \$ _____

Please make check out to 'TBE' and write 'mitzvah day' on the memo line.

(T-shirt order form is on the back)

Form should be mailed to:

Temple Beth Emeth
Attn: Mitzvah Day
2309 Packard St.
Ann Arbor, MI 48104

5	*Natural Area Preservation	Ages 7–Adult 20 Volunteers
----------	-----------------------------------	---------------------------------------

NAP is a division of the Ann Arbor Parks and Recreation Department responsible for stewardship and conservation of the natural areas within the city. May 3 is NAP's 10th annual Garlic Mustard Weed Out Day! TBE Volunteers will join in this effort at Huron Hills Golf Course Woods. NAP staff will lead this Mitzvah Day event, and will provide training, tools, water and snacks for the workday. Please wear long pants and closed-toe shoes. Meet at the park/trail sign on Hunting Valley Dr. (off Provincial Dr.).

Note: This workday will be from 10am to 1pm.

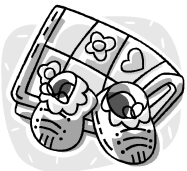
After the workday there will be a picnic/potluck at Leslie Science and Nature Center where you can meet up with volunteers from other locations, and eat food made with the plant you have pulled all morning! This is a family-friendly event.



6	TBE Young People's Social Action Projects	All Ages 30 Volunteers
----------	--	-----------------------------------

Join us in making crafts and gifts and decorating cookies for children and the elderly in local agencies and hospitals. Suitable for children who like art. Parents & grandparents welcome! *Children age 10 and up can work independently.* We will need parents to deliver the pieces to the recipients. Teens can volunteer to help. Donations are particularly needed for these projects, the list is on page 2.

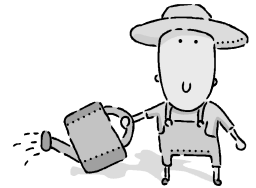
7	Blankets for Mott Children's Hospital	Sponsored by Sisterhood Ages 10 to Adult 18 Volunteers
----------	--	---



Knitters bring in 9" washable knit squares (of medium weight) to be assembled into afghans on Mitzvah Day. We will also be making fleece receiving blankets to be used for babies at Mott Children's Hospital. Contact Judith Rose for more information at judithr@umich.edu or 971-2682.

8	Matthaei Botanical Gardens	Ages 13–Adult 8 Volunteers
----------	-----------------------------------	---------------------------------------

Matthaei Botanical Gardens conducts research and presents display gardens with three conservatories, trails, gardens, and gift shops. Volunteers will assist with outside tasks in natural area restoration (weather permitting). Please wear appropriate clothing. A staff person will guide you through the activities.



9	Ronald McDonald House	Ages 11–Adults B'nai Mitzvah Project 15 Volunteers
----------	------------------------------	---

We encourage B'nai Mitzvah students and their parents to register for this project. Children of the B'nai Mitzvah classes must be accompanied by an adult.

Ronald McDonald House provides a "home away from home" for families of seriously ill children receiving treatments at nearby University of Michigan hospitals. Help with the chores of the families that are done on a daily basis as well as other housecleaning.

10	Alpha House/ Interfaith Hospitality Network	Twenties & Thirties (TNT) 10 Volunteers
-----------	--	--

The mission of IHN at Alpha House is to provide temporary shelter, food and support services to homeless families in a caring atmosphere of dignity and safety. While at Alpha House, families receive extensive case management, housing relocation, children's programs, parenting support, health education, and follow-up services.



Help prepare the Alpha House grounds for Spring! Activities will include spreading mulch, raking leaves, picking up fallen branches, maintaining the trail, and sprucing up the outdoor children's play area. Participants are encouraged to dress appropriately, wear work gloves, bring rakes and shovels.

T-Shirt Order Form

Order your high quality, slate blue shirt with white lettering. These shirts will be available at the t-shirt table in front of the chapel. Remember, your part in Mitzvah Day throughout the year. You will want a shirt for each participant in the family!

Size	Adult T-Shirts - \$ 15 each	Size	Children's T-Shirts - \$ 10 each
S	# of Shirts: _____ Cost: \$ _____	S	# of Shirts: _____ Total Cost: \$ _____
M	# of Shirts: _____ Cost: \$ _____	M	# of Shirts: _____ Total Cost: \$ _____
L	# of Shirts: _____ Cost: \$ _____	L	# of Shirts: _____ Total Cost: \$ _____
XL	# of Shirts: _____ Cost: \$ _____	XL	N/A



WIRELESS RECYCLING TO HELP SUPPORT SURVIVORS OF DOMESTIC VIOLENCE AND SEXUAL ASSAULT

Donate your used wireless phone and you will be providing:

- Emergency phones for domestic violence and sexual assault survivors
- Financial support for survivors of domestic and sexual violence
- An easy way to recycle used phones and keep them out of landfills



Donated phones will be reused and recycled with a portion of the proceeds going to Safe House Center. Phones will be recycled by ReCellular.

A collection box is in the TBE Office.

Bring your phone and charger in prior to or on Mitzvah Day.

Collection Drive for Home of New Vision

Please bring on Mitzvah Day: unused and packaged shampoos, conditioners, lotions, tampons, pads, toothbrushes, toothpaste, packaged floss; new or gently used clean twin sheet sets, towels, pillow cases, etc...

The Home of New Vision provides substance abuse treatment focusing on recovery for women addicts and alcoholics. They have several residential facilities in Ann Arbor and Jackson, including Community Correction Houses which provide an alternative to jail for women whose crimes are drug or alcohol related. They also provide outpatient services including a dual diagnosis program for women who suffer from mental illness as well as addiction.

Sponsored by TBE Sisterhood.

Genesis Volunteer Opportunities

There are lots of opportunities to help with the building and grounds upkeep. Individuals interested in painting or cleaning projects, please contact Stu Simon, simonstu@aol.com, or 429-5935 for further information

Genesis Grounds Clean-up

We invite you to join hands with our friends from St. Clare's on **Sunday, April 27 from 1:30-4:30 pm** for Spring Clean-up Day. Even one hour of your time is a huge help. Make it a family affair if you wish and tell your teens we're pleased to sign their "community service forms". We'll rake, weed, turn the mulch and sweep up the winter debris. Please bring your own rake, weed digger and work gloves. We'll provide the compostible bags. Hope to see you then!

Gratefully,

Your Genesis Grounds Committee

Linda Annesley, Cyndi Cook, Leonore Gerstein, Penny Griffith

Furniture Donations in good condition needed for Friends in Deed & Jewish Family Services.

For more information, call FID at 484-7607, or JFS at 769-0209.

AARTY

Ann Arbor
Temple Youth

Friday, April 18,
Cookie-A-thon & Shul-in
Bake cookies for social service agencies!

For more info, contact Abe Morrison,
amorrison@templebethemeth.org.